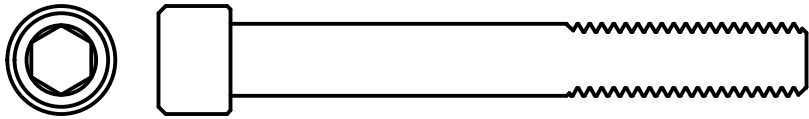


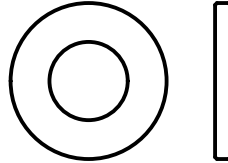
CROSSMEMBER

Z31 - 300ZX

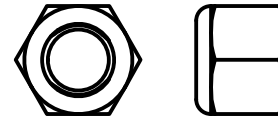
ITEM 1
SHCS - 3/8-16 x 3.00", ALLOY
QTY: 4 PER ASM



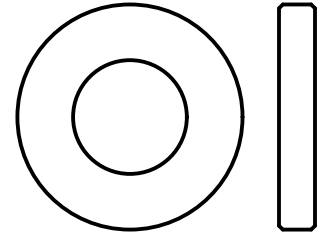
ITEM 2
WASHER
3/8, GRADE 8, SAE
QTY: 4 PER ASM



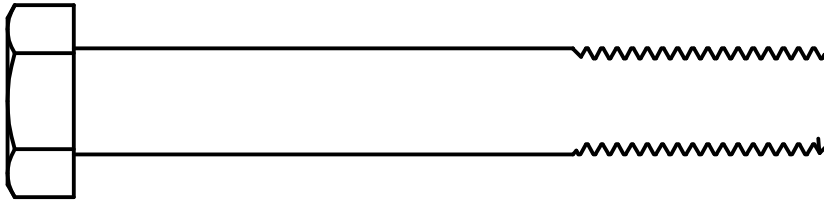
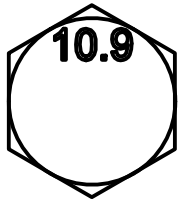
ITEM 3
NYLON LOCK NUT
3/8-16, GRADE 8
QTY: 4 PER ASM



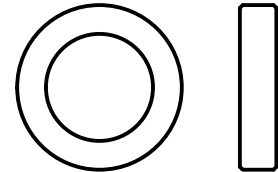
ITEM 4
WASHER
9/16, GRADE 8, SAE THICK
QTY: 6 PER ASM



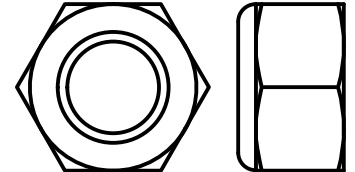
ITEM 5
HHCS - M14-2.00 x 100mm, 10.9
QTY: 2 PER ASM



ITEM 6
SPACER-4 14mm SPACER
QTY: 4 PER ASM

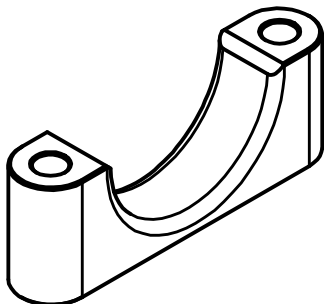


ITEM 7
NYLON LOCK NUT
M14-2.00, 10.9
QTY: 2 PER ASM

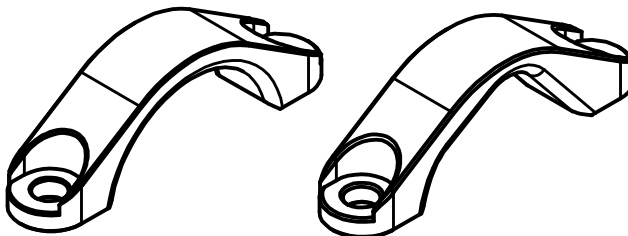


ASSEMBLED / INCLUDED ITEMS

ITEM 8 Z31 - LOWER RACK CLAMP
QTY: 2 OF EACH PER ASM



ITEM 9 Z31 - UPPER RACK CLAMP
1 OF EACH PER ASM



ITEM 10 Z31 - RACK CLAMP SPACER
QTY: 4 PER ASM

