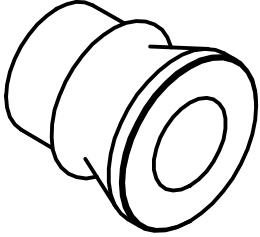


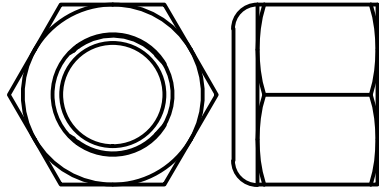
# REAR SUSPENSION KIT

REAR SUSPENSION KIT  
PAGE 2:2  
S30 - 240Z / 260Z / 280Z

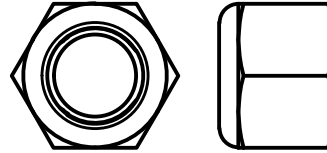
ITEM 8  
HMS - 5/8 TO 1/2  
QTY: 8 PER ASM



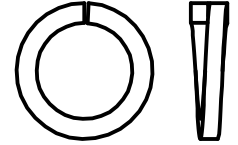
ITEM 9  
NYLON LOCK NUT  
5/8-11, GRADE 8  
QTY: 2 PER ASM



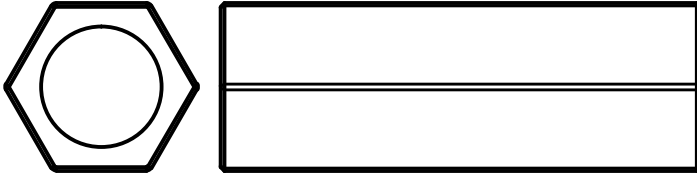
ITEM 9  
NYLON LOCK NUT  
1/2-13, GRADE 8  
QTY: 8 PER ASM



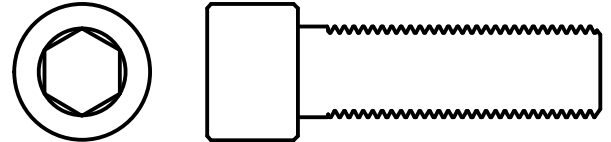
ITEM 10  
SPLIT LOCK WASHER  
M12, ALLOY  
QTY: 8 PER ASM



ITEM 11  
5/8-18 x 2.50 TURNBUCKLE  
QTY: 2 PER ASM



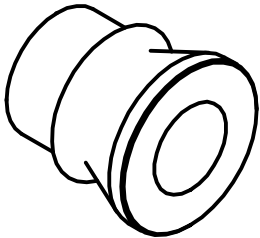
ITEM 12  
SHCS - M12x1.25 x 40mm, ALLOY  
QTY: 8 PER ASM



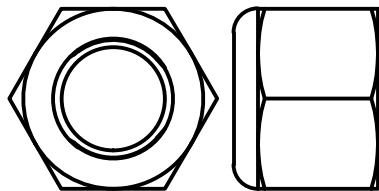
# REAR SUSPENSION KIT

REAR SUSPENSION KIT  
PAGE 2:2  
S30 - 240Z / 260Z / 280Z

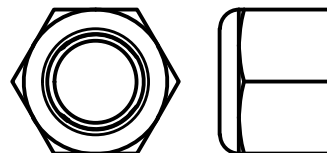
ITEM 8  
HMS - 5/8 TO 1/2  
QTY: 8 PER ASM



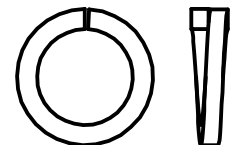
ITEM 9  
NYLON LOCK NUT  
5/8-11, GRADE 8  
QTY: 2 PER ASM



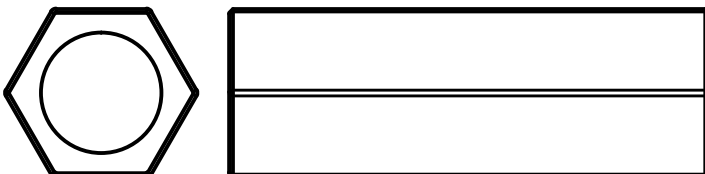
ITEM 9  
NYLON LOCK NUT  
1/2-13, GRADE 8  
QTY: 8 PER ASM



ITEM 10  
SPLIT LOCK WASHER  
M12, ALLOY  
QTY: 8 PER ASM



ITEM 11  
5/8-18 x 2.50 TURNBUCKLE  
QTY: 2 PER ASM



ITEM 12  
SHCS - M12x1.25 x 40mm, ALLOY  
QTY: 8 PER ASM

